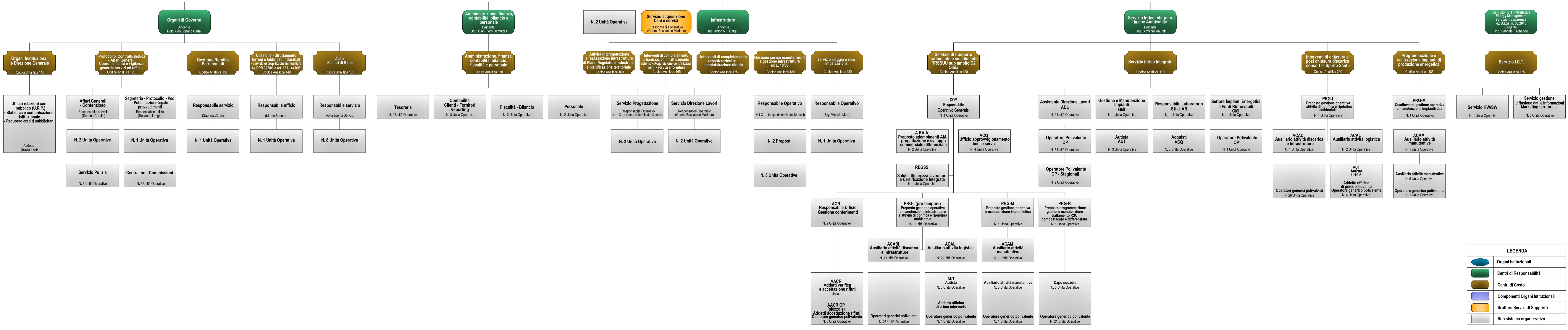
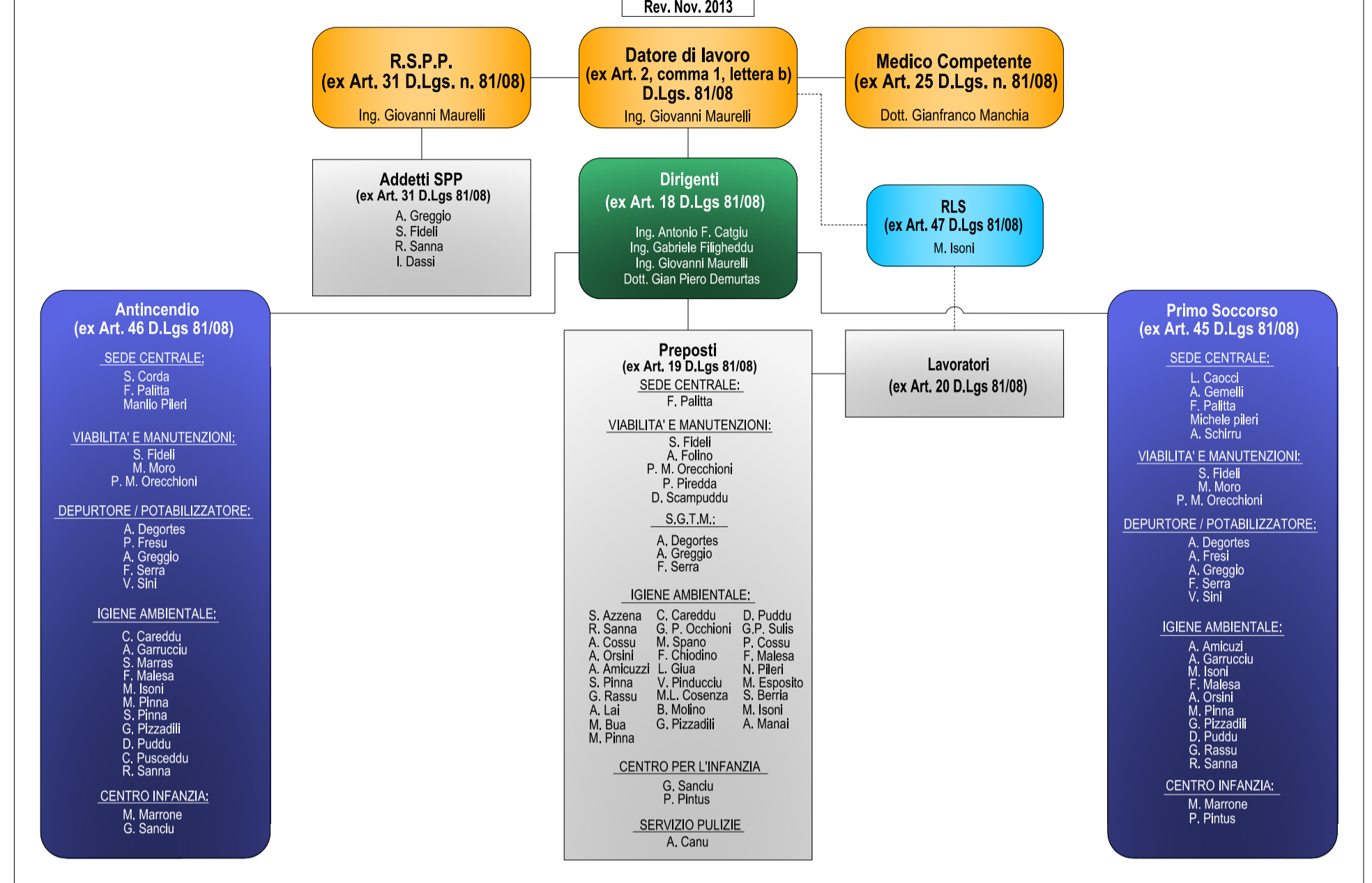
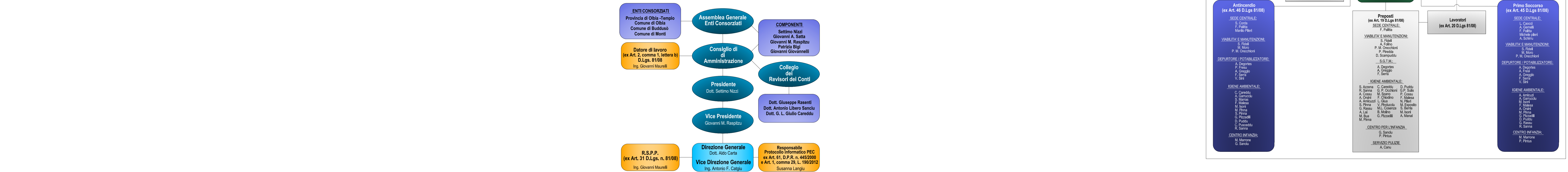


# ORGANI DI GOVERNO E ASSETTO DIRIGENZIALE MACRO ORGANIZZAZIONE C.I.P.N.E.S. - GALLURA

## MODELLO ORGANIZZATIVO DELLA SICUREZZA - ex Art. 31 D.Lgs 81/08 -



LEGENDA	
<span style="color: blue;">■</span>	Organi Istituzionali
<span style="color: green;">■</span>	Centri di Responsabilità
<span style="color: brown;">■</span>	Centri di Costo
<span style="color: yellow;">■</span>	Componenti Organi Istituzionali
<span style="color: orange;">■</span>	Snture Servizi di Supporto
<span style="color: grey;">■</span>	Sub sistema organizzativo